



MACHINERY

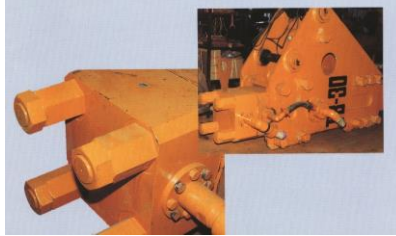
【MAIN APPLICATIONS】

Cement Mill (Liner Stopper)
 Concrete Mixer (Decelerator)
 Power Cylinder (Drive Shaft Stopper)
 Excavator (Drill Drive Shaft Stopper)
 Rock Drilling Machine
 (Hydraulic Breaker Stopper)
 Agitator (Impeller Stopper)
 Large Hydraulic Press (Cylinder Unit, Etc.)
 Compressor (Axis Stopper)

Pump (Impeller Stopper)
 Tapping Machine (Ball Screw)
 Injection Molding Machine
 Steel Making Machinery
 (Straightening Roll Stopper)
 Conveyor Rollers
 Industrial Robot Arm Portion
 Die-casting Machine (Core Pin Stopper)
 Etc.



Excavator



Hydraulic Breaker Tie Rod Stopper



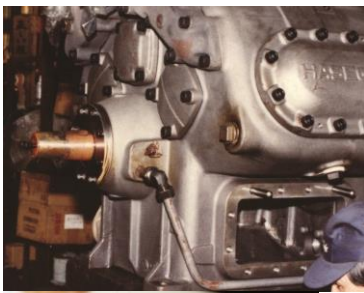
Robot



Cement Mill



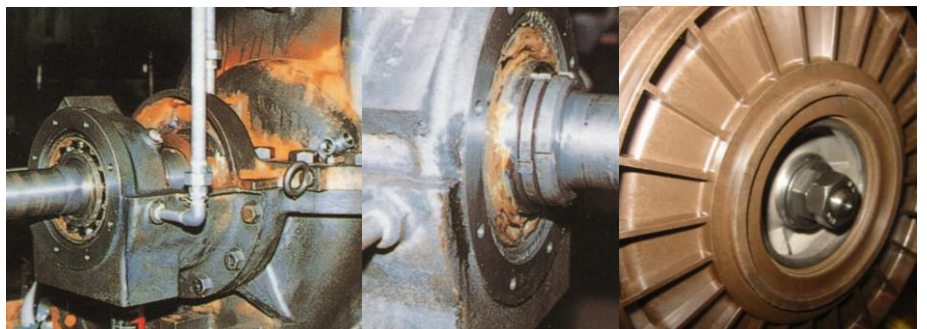
Injection Molding Machine



Steel Making Machinery (Straightening Roll Stopper)



Compressor



Pump

Impeller Stopper