

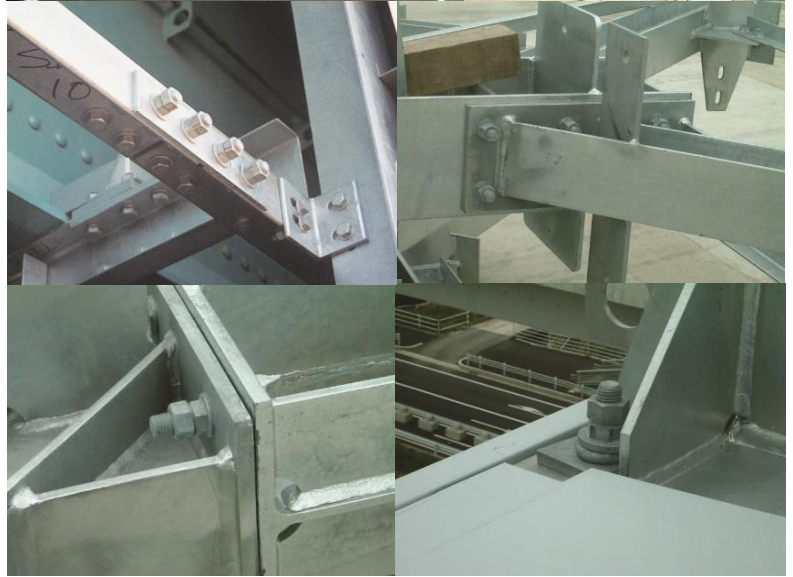
# HIGHWAY

**【MAIN APPLICATIONS】**

- Road Joints
- Soundproof Wall Joint
- Sound-absorbing Panels
- Illuminating Equipment and Base Plate
- Direction Board
- Jet Fan in Tunnels
- Grating Joint
- Guard Rail Joint
- ETC(Electronic Toll Collection) Board
- Information Board
- Storm Drain Cover Securing



Lighting Columns Anchor Portion  
(Metropolitan Expressway)



Various Soundproof Walls



Sound - Absorbing Panels



Aluminum Highway Fence (Second Tomei Expressway)